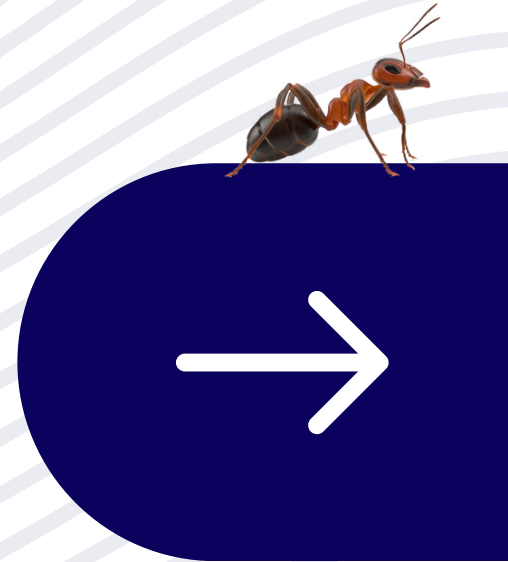


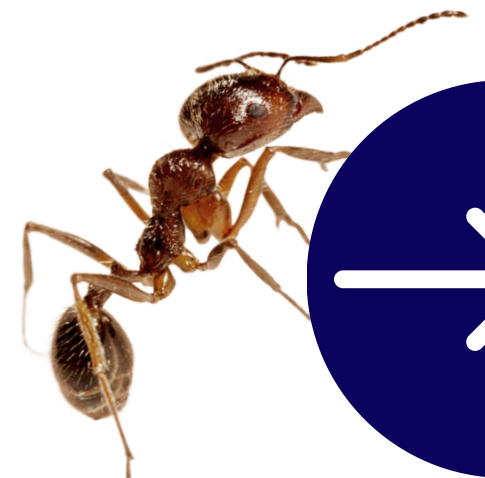
A-Z OF TYPES OF ANTS IN DFW & SURROUNDING



A

- Acrobat ant

Characterized by their ability to raise their abdomen (heart shaped gaster) over their thorax when threatened, are a common species found in various habitats worldwide. While they typically nest outdoors in wood or under stones, they can become household pests when they invade homes in search of food or shelter.



A

- Argentine ant

These small, brown ants are common in urban areas and can form large colonies. They are known for their tendency to form extensive trails, particularly in moist environments.



C

- Carpenter ant

Large ants that nest in wood. While they don't consume wood like termites, they can cause damage to structures by excavating galleries for nesting.



F

- Fire ant



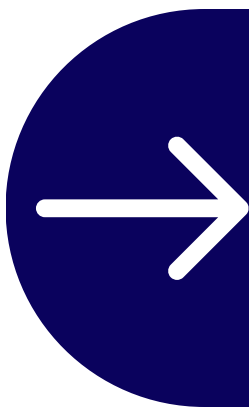
These ants are known for their aggressive behavior and painful stings. They build large mound nests in open areas such as lawns and fields.



0

- Odorous House ant

These ants emit a distinctive odor when crushed, often described as resembling rotten coconuts or blue cheese. They typically nest indoors, particularly in areas with moisture.



P



- Pharaoh ant

Pharaoh ants are tiny, light brown ants that are often found in buildings, particularly in warm, humid areas. They can be challenging to control due to their ability to form multiple colonies and their resistance to many insecticides.



T

- Texas Leaf Cutting ant

These ants are known for their characteristic behavior of cutting and carrying pieces of leaves to their underground nests. While they primarily feed on fungus grown on the harvested leaves, they can cause damage to ornamental plants.



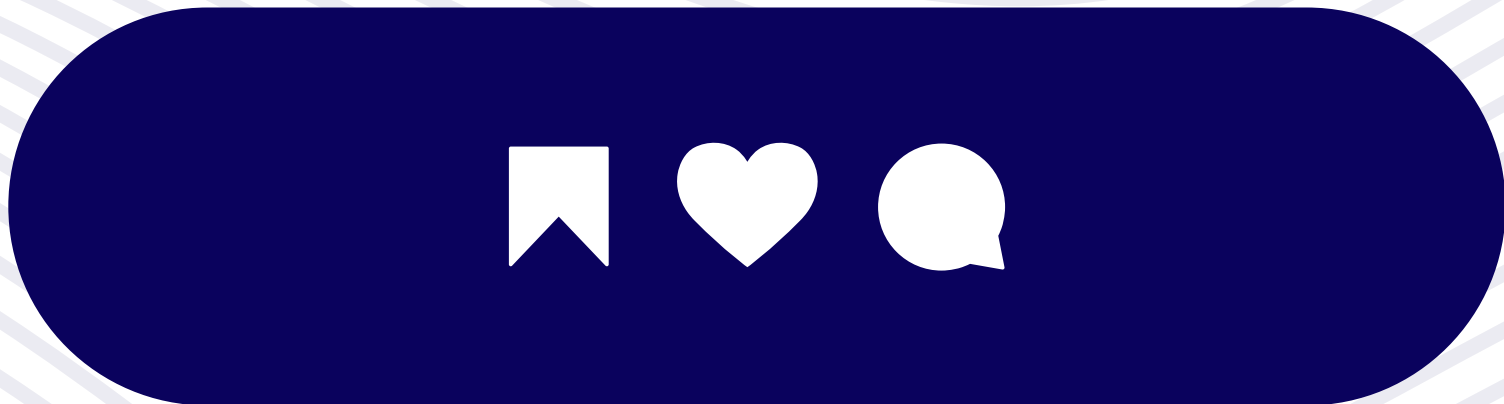
SUPER PEST SERVICES

Understanding the **behavior** and **habits** of these common ant species can help in implementing **effective pest control strategies** to manage ant infestations in residential and commercial properties in the Dallas-Fort Worth area.

SUPER PEST SERVICES



**SAVE THIS POST IF
YOU FIND IT USEFUL**



SUPERTEAMSERVICES.COM