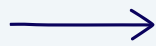




SWIPE



10 COMMON WINTER RODENTS IN NORTH TEXAS.

An interactive guide on the **top ten** most common winter rodents, **where** they can be found, factors that could increase the chances of a **home infestation**, and **preventive and remedial** actions to take in the case of an infestation.

Super Pest Services
940-507-4822
www.superteamservices.com



NORWAY RAT (aka Brown rat)

Classification:

Mammal (Rodentia)

Areas found:

Urban areas, near waterways

Where it's found on the house:

Can be found either inside or outside the property

Factors leading to house invasion:

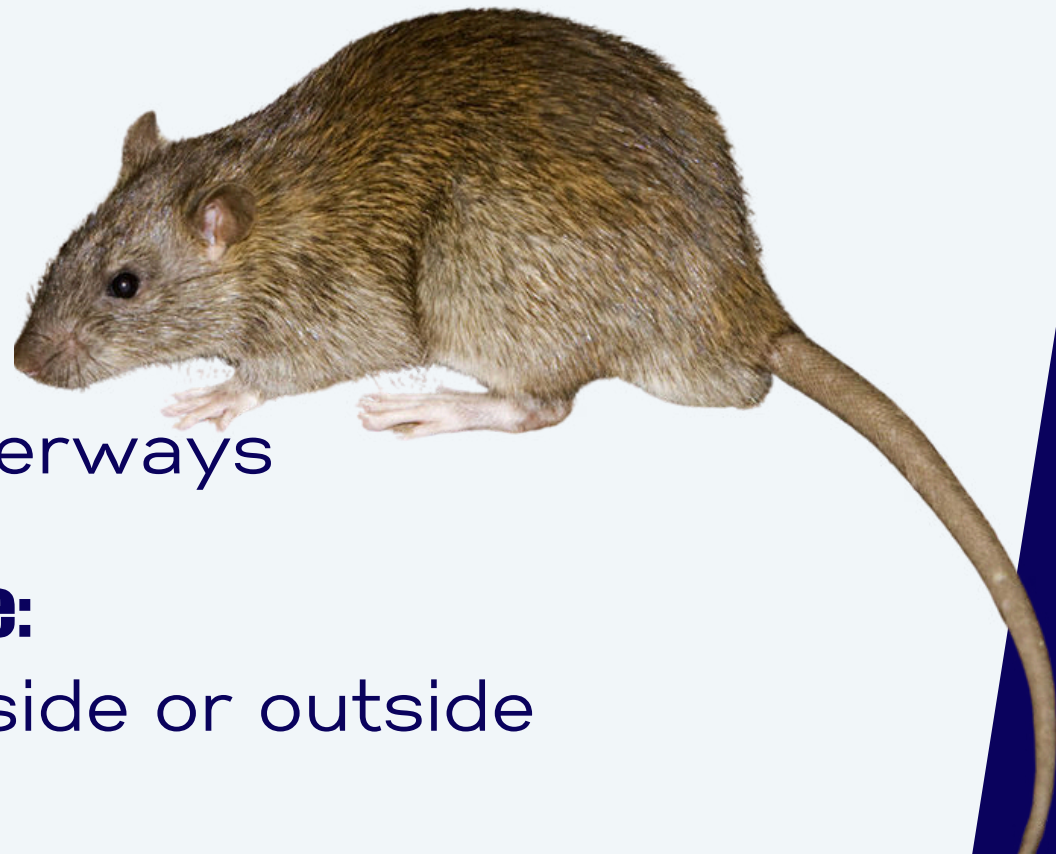
Food availability, poor sanitation, easy access points

Prevention tips:

Seal cracks, store food properly, eliminate water sources.

Actions in case of infestation:

Call pest control.
Use traps or baits



ROOF RAT (aka Black rat)

Classification:

Mammal (Rodentia)

Areas found:

Coastal and urban areas, particularly near buildings

Where it's found on the house:

Often inside attics, ceilings

Factors leading to house invasion:

Open vents, tree branches close to roofs

Prevention tips:

Trim branches near roof, seal vents, inspect roof regularly

Actions in case of infestation:

Professional rodent exclusion and trapping



HOUSE MOUSE



Classification:

Mammal (Rodentia)

Areas found:

Found in all areas, particularly urban and rural houses

Where it's found on the house:

Inside homes and buildings

Factors leading to house invasion:

Easy access to food and warmth during winter

Prevention tips:

Seal entry points, clean up food, maintain storage areas

Actions in case of infestation:

Set traps, use bait stations



DEER MOUSE



Classification:

Mammal (Rodentia)

Areas found:

Rural, forests, and grasslands

Where it's found on the house:

Typically outside but may invade homes

Factors leading to house invasion:

Colder temperatures, close proximity to fields

Prevention tips:

Repair holes in walls, seal cracks, secure windows

Actions in case of infestation:

Professional pest control, monitor for Hantavirus



RACCOON



Classification:

Mammal (Procyonidaetia)

Areas found:

Urban, suburban, and forested areas

Where it's found on the house:

Found in attics, chimneys

Factors leading to house invasion:

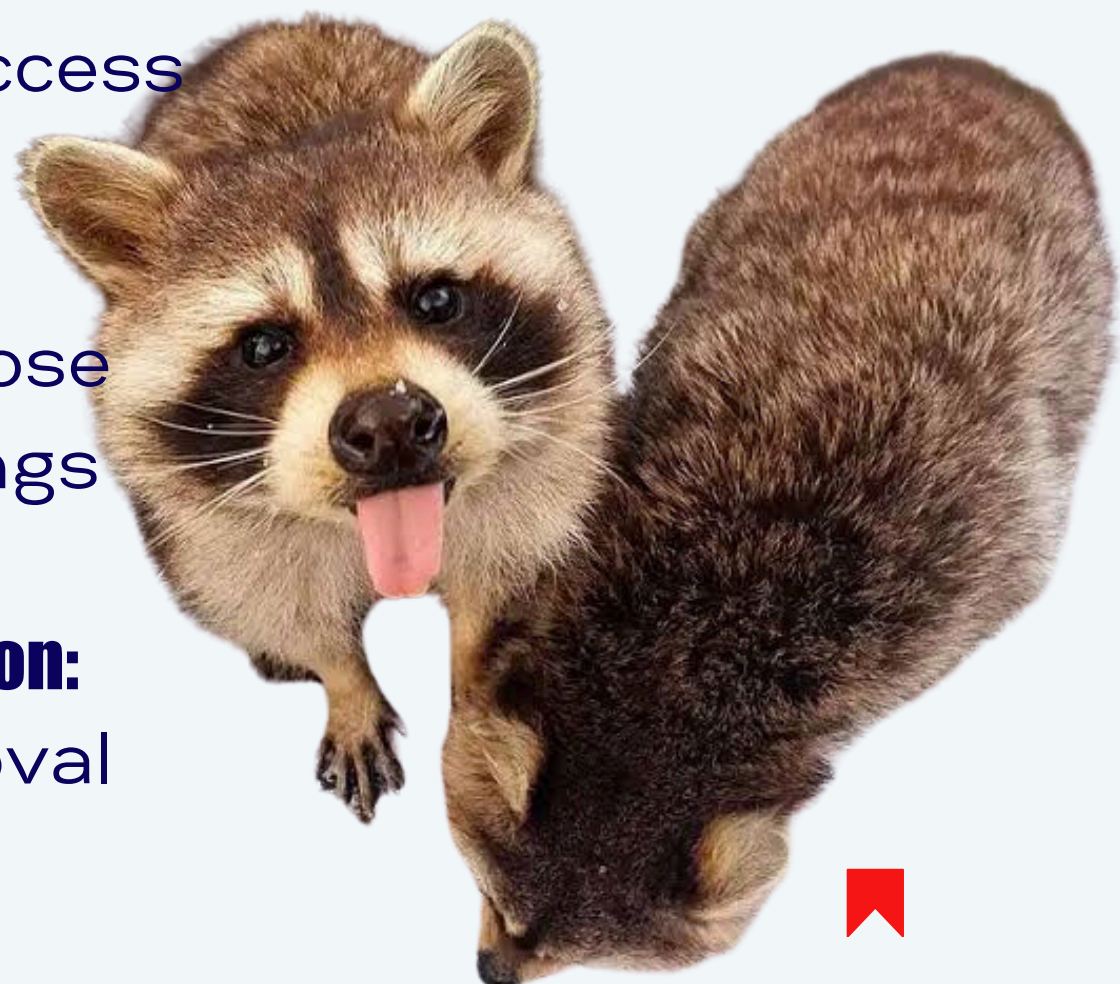
Food availability, open garbage, easy attic access

Prevention tips:

Secure trash cans, close chimneys, seal openings

Actions in case of infestation:

Contact wildlife removal services



COTTON RAT



Classification:

Mammal (Rodentia)

Areas found:

Grasslands and fields, agricultural areas

Where it's found on the house:

Mostly outdoors

Factors leading to house invasion:

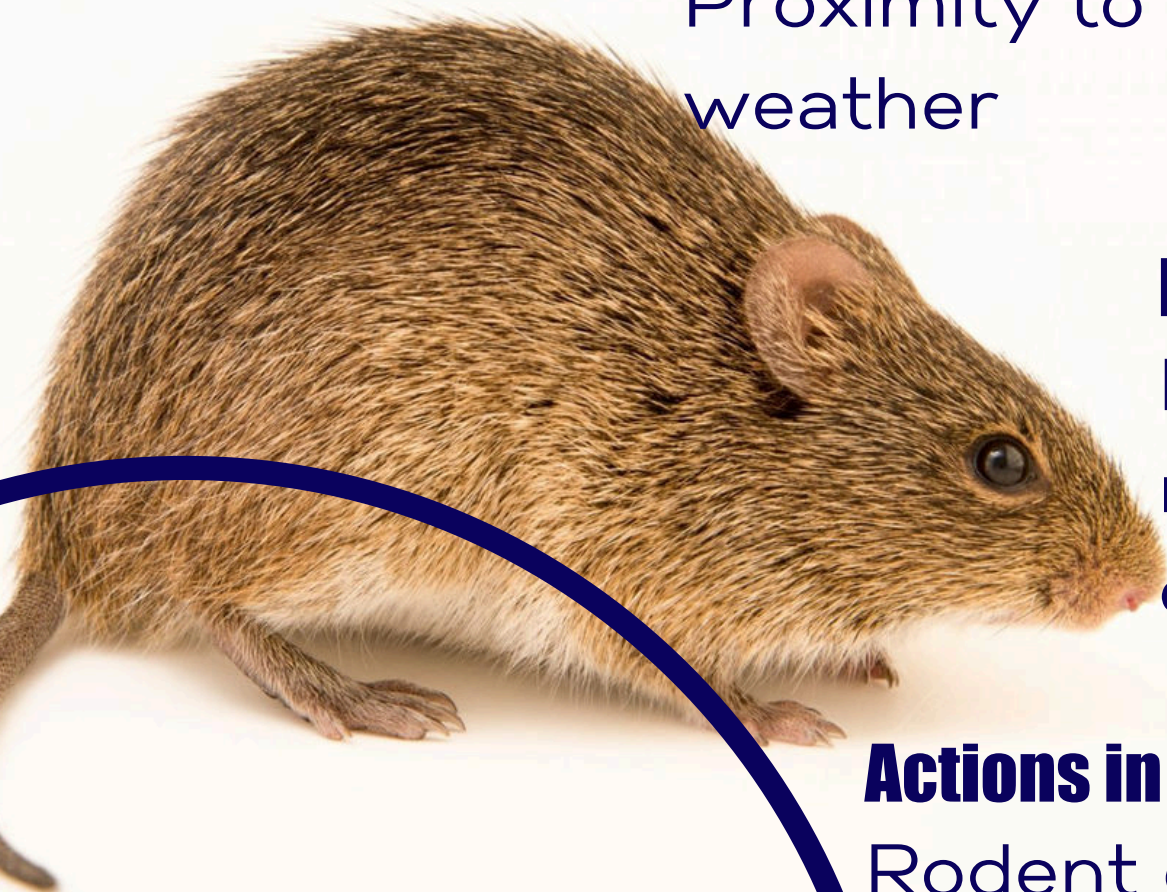
Proximity to farmland, cold weather

Prevention tips:

Maintain clean yards, remove tall grass and debris

Actions in case of infestation:

Rodent control program



SQUIRREL



Classification:

Mammal (Rodentia)

Areas found:

Wooded and suburban areas

Where it's found on the house:

Inside attics or chimneys

Factors leading to house invasion:

Tree branches near homes,
unsealed vents

Prevention tips:

Trim branches near home,
install chimney caps

Actions in case of infestation:

Professional trapping and
removal



OPOSSUM



Classification:

Mammal (Didelphimorphia)

Areas found:

Found in wooded areas and near water

Where it's found on the house:

Inside garages, sheds, attics

Factors leading to house invasion:

Shelter from cold, food access

Prevention tips:

Secure trash, repair entry points, block crawl spaces



Actions in case of infestation:

Professional removal, check for structural damage



ARMADILLO

Classification:

Mammal (Cingulata)

Areas found:

Found in rural and forested areas

Where it's found on the house:

Primarily outside



Factors leading to house invasion:

Loose soil for burrowing, soft ground, near foundations

Prevention tips:

Remove easy access to under structures, maintain yards

Actions in case of infestation:

Humane trapping and relocation



FIELD MICE



(aka Meadow Voles)

Classification:

Mammal (Rodentia)

Areas found:

Meadows, grasslands, suburban fields

Where it's found on the house:

Mostly outdoors, but may enter in winter

Factors leading to house invasion:

Cold temperatures, food scarcity

Prevention tips:

Clean up garden debris, maintain outdoor sheds



Actions in case of infestation:

Set traps around entrances, consult pest services



WAS THIS HELPFUL?

Be sure to *save* this post so you can
return to it later...

940-507-4822

www.superteamservices.com

